



Life-line Smart Gateway Broadband Kit Area & Personal Monitor



Benchmarking the definition of a portable emergency command center the Life-line Smart Gateway Broadband Kit combines a 4G broadband hot spot with the smarts of a fully functional Windows 10 computer. This combination provides a stand-alone solution for emergency response, crisis management, remote connectivity, operations backup and environmental monitoring.

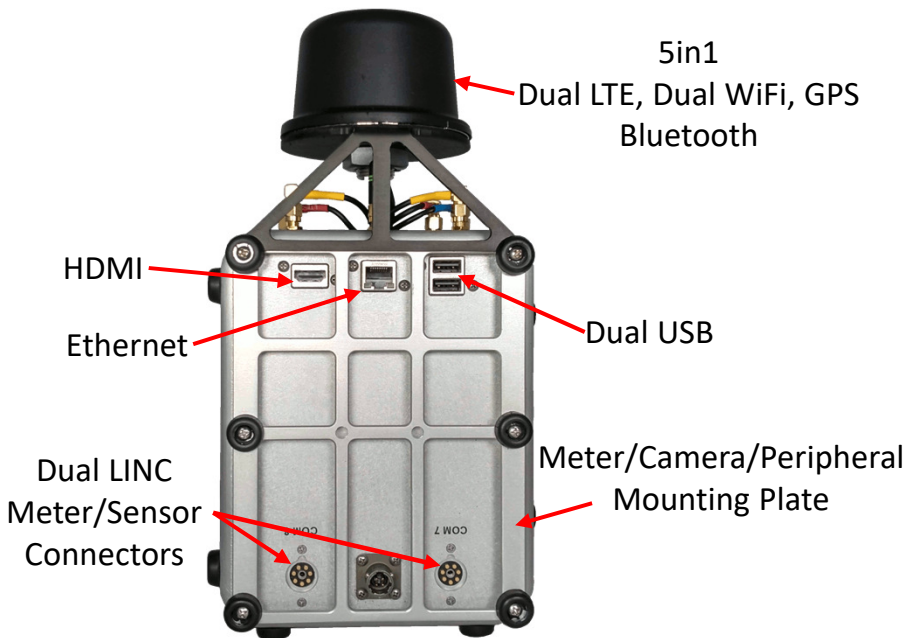


28320 Constellation Road
Valencia, CA 91355
(661) 295-5500

www.safeenv.com • info@safeenv.com



Life-line Smart Gateway Broadband Kit



Integrated Windows 10 Computer & Touchscreen

The Safe Environment Engineering (SEE) Life-line Smart Gateway Broadband Kit integrates many elements Emergency Response and sensor data acquisition into a single self-contained portable enclosure. The Smart Gateway hosts a rapid deployable wireless network suite along with an integrated fully functional Windows 10 computer. The Gateway incorporates a large variety of connection ports including dual USB, Serial, Ethernet, Bluetooth, WiFi and SEE's LINC sensor cable connector. Data transmission is managed through an integrated 3G/4G/LTE/5G (expandable) cellular router/WiFi hotspot hosting redundant broadband carriers, as well as, being FirstNet compatible.

Specifications

General

Enclosure: Rugged Machined Aluminum

Size: 7.26" x 5.76" x 3.38" (18.44 x 14.63 x 8.59 cm)

Weight: 6.5lbs

Antennas:

Omni Directional, 2.4GHz, 5dBi, SMA

Dipole Blade, 698-960/1700-2700MHz, 2/3dBi, SMA

Helical GPS, 1575MHz, -0.5dBi, SMA

Antenna Connector: Type SMA

Power: Battery Li-ion 15 Hour Operation

AC 100-240V 50/60Hz 0.8A

DC 14V 2.0A

Lights: Power, GPS, Modem, Signal Strength

Connectors: Ethernet, USB (x2), HDMI, Bluetooth, LINC Cable (x2)

Cellular Router – Cradlepoint IBR900-1200M

LTE: Embedded FirstNet Ready™ LTE-Advanced Modem with Fallback

5G: Expandable

WiFi: 802.11 a/b/g/n/ac wave 2; 128 Connected Devices; Dual-band

Carriers: All North American, European & Asia Pacific, Saudi Arabia
(AT&T, FirstNet, Verizon, T-Mobile, Rogers, TELUS, Bell...)

Ethernet Ports: 2 LAN/WAN switchable 10/100/1000

GPS/GNSS: TAIP & NMEA 0183 V3.0

Cloud Managed: NetCloud Manager

Integrated Computer

Processor:

Intel Cherry Trail Z8350 Quad Core

Base Frequency: 1.44GHz (1.92GHz Burst Frequency)

Operating System: Windows 10 IoT Enterprise

RAM: 4GB DDR3L

Storage Capacity: 64GB

GPU: Intel HD, 12 EUs @200-500Mhz, single-channel memory

USB: 3.0 x 1, USB 2.0 x 2

Connectivity:

Wi-Fi 802.11n 2.4G, Bluetooth 4.0

Integrated Arduino Co-processor: ATmega32u4 (Leonardo)

Video output: HDMI and MIPI-DSI

Onboard touch panel overlay connector

Supports 100Mbps Ethernet

Intel Processor GPIO x 6

ATmega Processor GPIO x 20

LINCmrs Detectors

Gamma NaI: 2 in (50.8 mm) 3 in (76.2 mm)

Gamma (High Dose Rate): Energy Compensated
Geiger-Müller Detector

Neutron ³He Proportional Counter Tube: 19 mm
(0.75 in) 106.7 mm (4.20 in); net: 18 mm (0.71 in) 75.7
mm (2.98 in); 8 atm (8.106 bar); surrounded by
polyethylene moderator

Life-line Smart Gateway Broadband Kit Area & Personal Monitor



Area Monitor - Attach, Plug-in and/or Connect Meters
www.safeenv.com/integrated-instruments/
 Rapid Deployment Go-Kit Models Available

Personal Smartphone Monitor
 Confined Space / Refinery / Chemical Processing
 Intrinsically Safe, Connect via WiFi and/or Cellular

Advantages / Benefits

- Modular (mix and match meters)
- Command / Tech Ref locations just need computer & Internet to view
- Intrinsically Safe Smartphone options
- No wireless setup
- Autonomous Operation - Not dependent on other Smart Gateways or Modems
- Connect using WiFi, Cellular or both
- FirstNet Ready Gateway and Smartphone
- Rapid deployment Go-Kits



Events

LINCmrs

The **Lifeline Interoperable Network Communicator Mobile Radiological System (LINCmrs)** supports a FLIR NaI 2x3 or 4x6 inch crystal radiation detector (with Neutron detection option) capable of immediate isotope identification and spectra generations. The detector incorporates a **Smart Gateway** system independently collecting, storing, reporting and analyzing detection information.



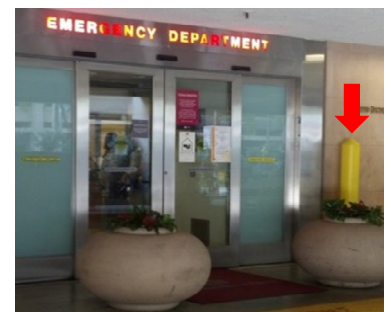
Wireless Smartphone remote control providing simple single click operation.



Mobile



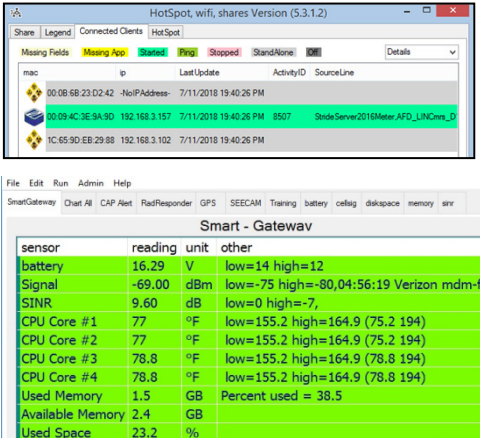
Transportable



Fixed

Life-line Smart Gateway Broadband Kit Area & Personal Monitor

Smart Gateway Software



Lifeline Sensor Sensor – Senses the wireless sensor/instrument connected and auto launches the corresponding Lifeline monitoring application for displaying, managing and reporting sensor/instrument readings.

Smart Gateway Meter App – Monitors the Smart Gateway as if it was a sensor. This Meter Application monitors internal battery level, LTE signal strength, computer temperature/capacities and GPS location information. The application provides warning and alarms in the event of a low battery, poor coverage and/or excessive heat conditions.

Gateway Customers Include



Gateways Utilized Significant Events

Hawaii Volcano Eruption
Indianapolis 500 100th
Papal Visit
Boston Marathon
Rose Bowl

Super Bowl
RNC
Superstorm Sandy
Joplin Tornado
Academy Awards

Inauguration
DNC
West Texas Explosion
Pro Bowl
World Series



28320 Constellation Road
Valencia, CA 91355
(661) 295-5500
www.safeenv.com • info@safeenv.com

