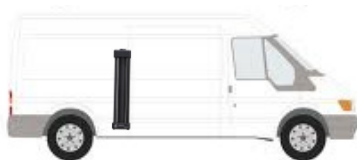


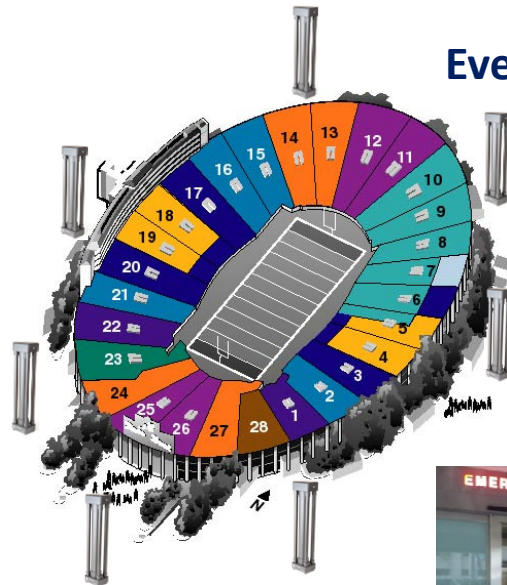


# LINCmrs

Manufactured by Safe Environment Engineering and powered by FLIR the LINC Mobile Radiological System (LINCmrs) is versatile self-contained wireless multi-mission radiological isotope detector easily configured for different types of monitoring requirements. Examples include mobile vehicle systems, portal applications, fixed facility and grouped for events requiring increased sensitivity detection.



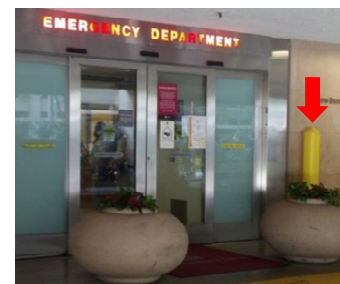
**Mobile**



**Events**

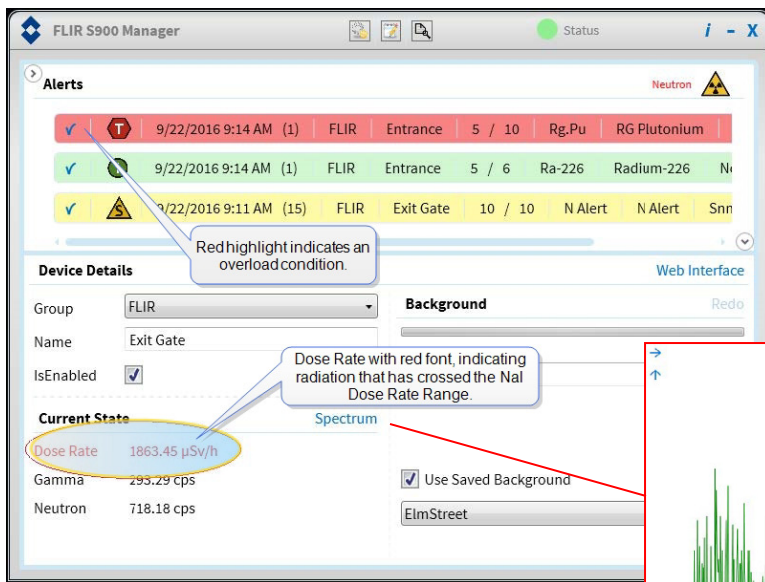


**Transportable**

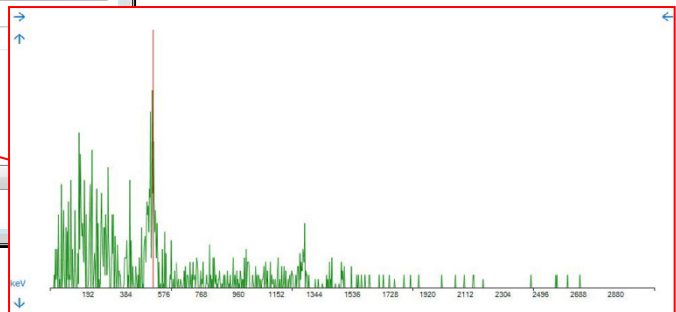


**Fixed**

# Integrated Software Tools



**Identification and Spectra Acquisition** - Integrated FLIR S900 software provides local access for isotope identification, alarm notifications and live/historical spectral analysis.



**Configurations**

Icon	Isotope	Descriptive Name	Include	Severity	Usage
1	Tc-99m	Technetium-99m	<input checked="" type="checkbox"/>	Innocent	MED
1	Th-232/U-232	Thorium-232/Urani-232	<input checked="" type="checkbox"/>	Innocent	NORM
1	Tl-201	Thallium-201	<input checked="" type="checkbox"/>	Innocent	MED
T	U-232/Th-232	Uranium-232/Thorium-232	<input checked="" type="checkbox"/>	Threatening	SNM
T	U-233	Uranium-233	<input checked="" type="checkbox"/>	Threatening	SNM
T	U-238	Uranium-238	<input checked="" type="checkbox"/>	Threatening	SNM
A	DU	D Uranium	<input checked="" type="checkbox"/>	Suspicious	IND
T	HEU	HE Uranium-235	<input checked="" type="checkbox"/>	Threatening	SNM
T	Wg.Pu	WG Plutonium	<input checked="" type="checkbox"/>	Threatening	SNM
T	Wg.PuS	WG Plutonium	<input checked="" type="checkbox"/>	Threatening	SNM
1	Xe-133	Xenon-133	<input checked="" type="checkbox"/>	Innocent	MED

**Configuration** - Users can custom configure isotope detection alarm and warning states to meet their unique facility or incident requirements

**Smart - Gateway**

sensor	reading	unit	other
battery	14.68	V	
Signal	-73.00	dBm	low=-75 high=-80
CPU Core #1	127.4	°F	low=155.2 high=164.9 (114.8 194)
CPU Core #2	123.8	°F	low=155.2 high=164.9 (111.2 194)
CPU Core #3	109.4	°F	low=155.2 high=164.9 (98.6 194)
CPU Core #4	113	°F	low=155.2 high=164.9 (100.4 194)

Activity ID: System | Training:  | Use Average of 3 readings:

4.5V | LINC Signal | User ID | Incident

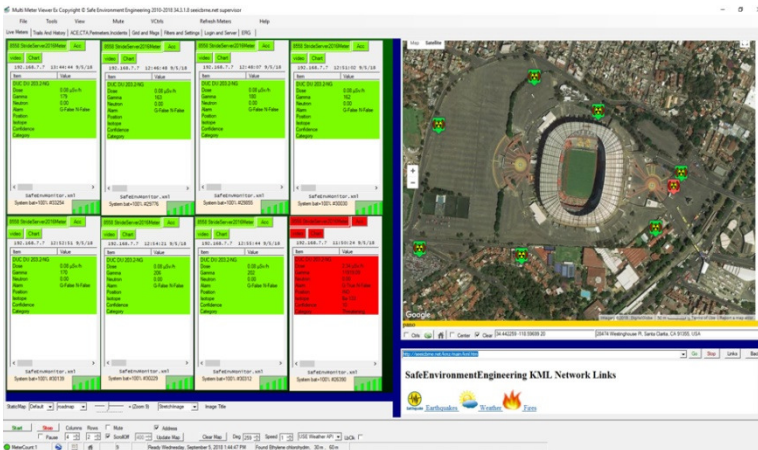
GPS OFF | DataIn:337 | # Samples: 337 | Run(dd:hh:mm:ss): 00:00:04

**Integrated Monitoring Application** - Monitors all aspects of the LINCmrs. This Meter Application monitors the detector's readings, internal battery level, LTE signal strength and quality, computer temperature /memory use and GPS location information. The application provides warning and alarms in the event of a low battery, poor coverage and/or excessive heat conditions and can report radiological data to RadResponder



Wireless Smartphone remote control providing simple single click operation for multi LINCmrs control.

# Life•line MultiMeterViewer



Life•line MultiMeterViewer (MMV) provides an overview of multiple LINCmrs and other detection instruments in a real time display. The software functions as an instant command center, displaying data and providing both audible and visual alarms. A geographical information system (GIS) interface provides instrument information including tracking and survey information as map layers. Web Interfacing provides product info, references, alarm settings, guidance documents and more. The CT-Analyst® plume modeling module provides accurate, instantaneous, 3D predictions of chemical, biological, & radiological (CBR) agent transport both in urban and site specific environments.

## Specifications

### General

**Size:** 7.3" x 5.8" x33" (18.5 x 14.7 x 83.8 cm)  
**Weight:** 18lbs  
**Antennas:** Omni Directional, 2.4GHz, 5dBi, SMA  
 Dipole Blade, 698-2700MHz, 2/3dBi, SMA  
 GPS, 1575MHz, -0.5dBi, SMA  
**Power:** Battery Li-ion 15 Hour Operation  
 AC 100-240V 50/60Hz 0.8A  
 DC 14V 2.0A  
**Lights:** None – Remote Smartphone Operation  
**Connector:** MIL-DLT-26482 Power, Bluetooth

### Cellular Router - Cradlepoint

**LTE:** Embedded LTE-Advanced 600 Mbps Modem & DC-HSPA+ Fallback  
**WiFi:** Dual-band, dual-concurrent WiFi; 802.11 a/b/g/n/ac wave 2  
**Carriers:** All North American, European & Asia Pacific, Saudi Arabia  
**Ethernet Ports:** 2 LAN/WAN switchable 10/100/1000  
**GPS/GNSS:** TAIP & NMEA 0183 V3.0  
**Cloud Managed:** NetCloud Manager

### Detectors

**Gamma NaI:** 2 in (50.8 mm) 3 in (76.2 mm)  
**Gamma (High Dose Rate):** Energy Compensated Geiger-Müller Detector  
**Neutron <sup>3</sup>He Proportional Counter Tube:** 19 mm (0.75 in) 106.7 mm (4.20 in); net: 18 mm (0.71 in) 75.7 mm (2.98 in); 8 atm (8.106 bar); surrounded by polyethylene moderator  
**Performance**  
**Energy Resolution:** Typically ≤ 8 % FWHM at 662 keV at 20 °C (68 °F) ambient temperature  
**Energy Range (Gamma Spectrum):** 20 keV – 3 MeV  
**Throughput:** > 100 kcps  
**Input Count Rate:** 300 kcps  
**Auto Calibration:** Yes  
**Corrections:** Deadtime corrected realtime  
**Spectrum Linearization:** Real-time gamma spectrum linearization  
**Dose Rate Range:** 0.01 µSv/h – 1 Sv/h  
**Dose Rate Resolution:** 10 nSv/h  
**Dose Rate Accuracy:** 30 % (50 keV – 1500 keV)  
**Energy Range (Dose Rate):** 50 keV – 1500 keV  
**Neutron Sensitivity:** 11 cps/nv 20%, thermal neutrons  
**Stabilization:** LED and 40K  
**Measuring Modes:** PHA; MPHA  
**Environmental**  
**Ambient/Operating Temperature:** -15 °C – +50 °C (+5 °F – +122 °F)  
**Storage Temperature:** -30 °C – +70 °C (-22 °F – +158 °F)  
**Humidity:** 10 % – 80 %; Non Condensing  
**Protection Rating:** IP 54

### Integrated Computer

**Processor:** Intel Cherry Trail Z8350 Quad Core  
 Base Frequency: 1.44GHz (1.92GHz Burst Frequency)  
**Operating System:** Windows 10 IoT Enterprise  
**RAM:** 4GB DDR3L  
**Storage Capacity:** 64GB  
**GPU:** Intel HD, 12 EUs @200-500Mhz, single-channel memory  
**USB:** 3.0 x 1, USB 2.0 x 2  
**Connectivity:**  
 Wi-Fi 802.11n 2.4G  
 Bluetooth 4.0  
 Integrated Arduino Co-processor: ATmega32u4 (Leonardo)  
 Video output: HDMI and MIPI-DSI  
 Onboard touch panel overlay connector  
 Supports 100Mbps Ethernet  
 Intel Processor GPIO x 6  
 ATmega Processor GPIO x 20  
 Gravity Interface Connectors x 6

## Contact

**Safe Environment Engineering**  
**28320 Constellation Road**  
**Valencia, CA 91355**  
**(661) 295-5500**

[www.safeenv.com](http://www.safeenv.com) • [info@safeenv.com](mailto:info@safeenv.com)

