



# Safe Environment Engineering

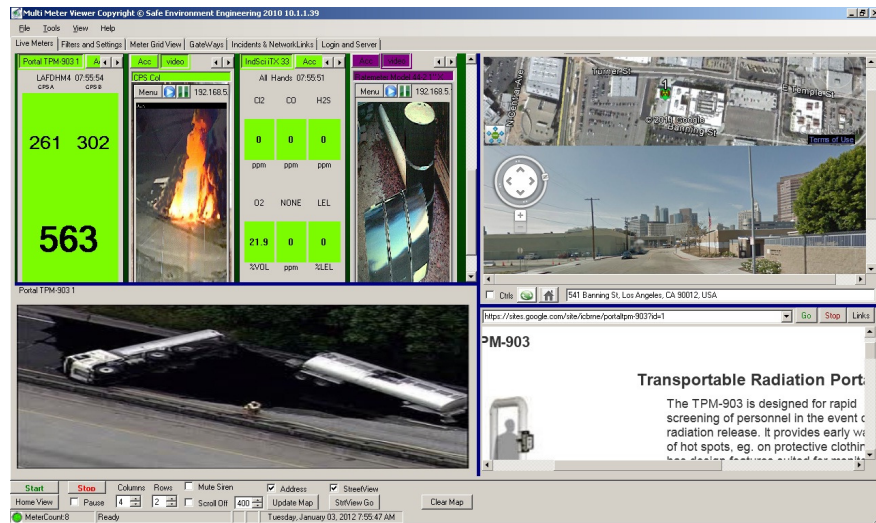
For Immediate Release  
January 1, 2012

## ***The Lifeline Wireless Monitoring System Video Integration***

Safe Environment Engineering is pleased to announce the integration of video (both still and streaming) as a component of our Lifeline family of products. Every integrated instrument has the capability of incorporating images or video as a component of the sensor readings being acquired. Remote viewers are now provided visual context to the sensor readings, as well as, location information from an integrated GPS.



VideoLINC



MultiMeterViewer Displaying both Live Video Streams and Still Imagery

The new Video Lifeline Interoperable Network Communicator (VideoLINC) streams wireless video that integrates with both instrument readings and GPS location information. The VideoLINC supports a resolution up to 640x480 through a 4.4mm lens supporting a 47° field of view.

The updated MultiMeterViewer application displays individual live video feeds or still images for each instrument. Any feed can be maximized in the video pane or right-clicked for full screen viewing. Live video is also supported along with video recording within each of the Lifeline Meter Applications.

Safe Environment Engineering's systems have been used to provide protection at many major Events of National Significance which involve many branches of Public Safety including federal, state and local law and fire enforcement officials.

Safe Environment Engineering advances the safety and security of the general public, First Responders, and critical infrastructure with real-time real-world wirelessly interoperable information solutions. We provide cost effective, dependable, and sustainable advanced technology products and services, and are at the forefront of applied sciences and standards.

For additional information please contact David Lamensdorf at 661-313-2686.

**28474 Westinghouse Place  
Valencia, CA 91355  
(661) 295-5500 • (661) 294-9246 Fax  
www.safeenv.com • info@safeenv.com**