

For Immediate Release
September 3rd, 2013



**Safe
Environment
Engineering**



United States
Naval Research Laboratory

Safe Environment Engineering receives exclusive license for the United States Naval Research Laboratory CT-Analyst® Plume Modeling and Backtrack Tool

To further integrate the work initiated through the Department of Homeland Security Integrated Chemical, Biological, Radiological, Nuclear and Explosives (ICBRNE) Program the United States Navy through the Naval Research Laboratory Technology Transfer Program has granted Safe Environment Engineering (SEE) the exclusive license to the CT-Analyst® Plume Modeling and Backtrack Tool. CT-Analyst® will be an integral component of SEE's Lifeline MultiMeterViewer providing the user with a very comprehensive instrumentation centric situational awareness tool.

The Life•line CT-Analyst® plume modeling module provides accurate, instantaneous, 3D predictions of chemical, biological, & radiological (CBR) agent transport both in urban and site specific environments. The tool works by using pre-computed detailed urban geometry and flow based on computational fluid dynamics and then post-processing the compressed simulation results instantly for users. CT-Analyst® can incorporate verbal reports, handle input from fixed and mobile sensors, and functions in realistic emergencies where the nature, amount, and location of an airborne contaminant source or Chemical, Biological, Radiological (CBR) agent is unknown and where the wind fields are dynamic and complicated by the city geometry. CT-Analyst® also provides the unique capability to immediately backtrack and simultaneously determine the location of multiple unknown sources simply based on sensor readings and meteorological parameters.

Life•line MultiMeterViewer provides an overview of multiple detection instruments in a real time display. The Viewer functions as an instant command center, displaying data and providing both audible and visual alarms. A geographical information system (GIS) interface provides instrument information including tracking and survey information as map layers. Web Interfacing provides product info, references, alarm settings, guidance documents and more. The MMV can be installed on any Windows based PC or laptop. Filters and customizable display allow the specific user to view the data that is most important to them.

**28474 Westinghouse Place
Valencia, CA 91355
(661) 295-5500 • (661) 294-9246 Fax
www.safeenv.com • info@safeenv.com**

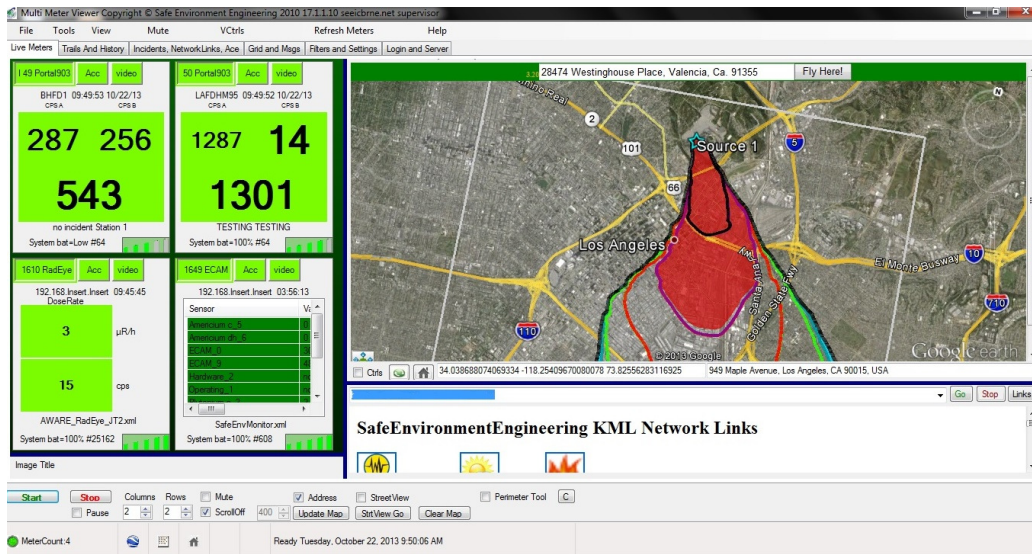


**Safe
Environment
Engineering**



United States
Naval Research Laboratory

Safe Environment Engineering will be focusing the sale of the MultiMeterViewer with the CT-Analyst® module within the fields of Public Safety, Industrial Safety and Monitoring and Environmental Monitoring.



About Safe Environmental Engineering

Safe Environment Engineering (SEE) advances the safety and security of the general public, First Responders, and critical infrastructure with real-time real-world wirelessly interoperable information solutions. SEE provides cost effective, dependable, and sustainable advanced technology products and services, and is at the forefront of applied sciences and standards. SEE Systems are an integral part of the Department of Homeland Security's Integrated Chemical, Biological, Radiological, Nuclear and Explosive (ICBRNE) program. Visit www.safeenv.com for more information or call (661) 295-5500.

About Naval Research Laboratory

The Naval Research Laboratory (NRL) is the corporate research laboratory for the Navy and Marine Corps and conducts a broad program of scientific research, technology and advanced development. NRL has served the Navy and the nation for over 85 years and continues to meet the complex technological challenges of today's world. Visit www.nrl.navy.mil for more information.

**28474 Westinghouse Place
Valencia, CA 91355
(661) 295-5500 • (661) 294-9246 Fax
www.safeenv.com • info@safeenv.com**